



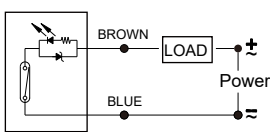
## CYLINDER MAGNETIC SENSORS SM-1 SERIES

- 2-wires or 3-wires version, standard with LED indicator;
- Various models are available, suitable for many kinds of cylinders;
- Compatible for SMC cylinders and else brands cylinders;
- Can do M8 / M12 connector version;
- Cost-effective products to meet your requirements.

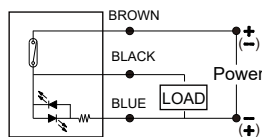
Induction switch type	SM-1R	SM-1RC	SM-1B	SM-1N
Induction principle	Reed sensor	Reed sensor	2-wires version (Electronic type)	3-wires version (NPN type)
Use voltage range	5~120V DC/AC	5~30V DC	10~28V DC	5~30V DC
Maximum switching current	100 mA Max.	500 mA Max.	50 mA Max.	200 mA Max.
Maximum contact capacity	10 W Max.	10 W Max.	1.4 W Max.	6 W Max.
Internal consumption current	None	10 mA Max. @ 24V	12(40) $\mu$ A Max. @24V	7.5 mA Max. @ 24V
Residual pressure drop	2.5V Max. @ 100mA DC	2.5V Max. @ 100mA DC	2.6V Max. @ 50 mA DC	1 V Max. @ 200 mA DC
drain current	None	None	20(90) $\mu$ A Max. @28V	0.01 mA Max.
Indicator light	Red LED	Red LED	Red LED	Red LED
cable conductor	2C, Black PVC	2C, Black PVC	2C, Black PVC	3C, Black PVC
Sensing sensitivity	45~55 Gs	45~55 Gs	40~750 Gs	40~750 Gs
Maximum switching frequency	1000 Hz	1000 Hz	1000 Hz	5000 Hz
Operating temperature range	-10 ~ + 70°C	-10 ~ + 70°C		-10 ~ + 70°C
Impact-resistant	30 G	30 G		50 G
Vibration-resistant	9 G	9 G		9 G
Protection level	IP 67	IP 67		IP 67
Reverse polarity protection	None	None	Reverse polarity protection of power supply; Sudden wave absorption protection	

### WIRING CONNECTION

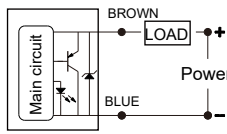
Reed type  
2-wires version



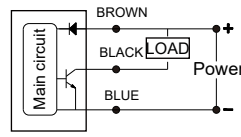
Reed type  
3-wires version



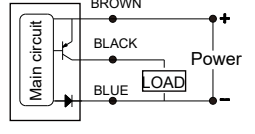
Electronic type  
2-wires version



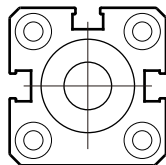
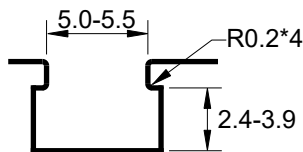
Electronic type  
NPN version



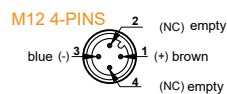
Electronic type  
PNP version



### SUITABLE CYLINDERS



### 2-wires Connectors



### 3-wires Connectors

